

The World Leader in Free-Disc™ Pumping Technology



Model: PVP837

- Mounts to pump frame
- SS304 construction
- Galvanized wire cable
- Hand winch operation
- 360° rotation
- 500lb capacity
- 100% Made in the USA



Two year warranty



Made in the USA

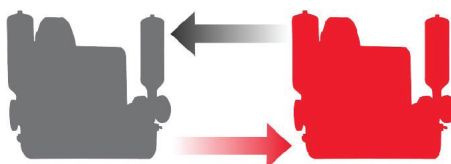
The Model PVP837 Portable Davit Crane was designed specifically for the Double Disc Pump™ Models 6DD SX76, 6DD SX107 and 8DD DX214 to aid in maintenance when elastomeric replacement is required. The crane mounts directly to the pump frame requiring no additional support or floor space. Existing installations only require a simple frame modification to allow mounting.

The spur gear hand winch is equipped with automatic disc brake for load control. The SS304 socket assembly is bolted to the pump frame allowing 360° rotation of the crane assembly. For installations with multiple pumps the socket and crane assembly can be quickly moved to each pump frame.

The crane is designed to quicken pump repair when complete pump rebuild is required. The crane lifts the pedestal drive assembly and keeps it suspended while allowing the upper trunnion to be replaced. The automatic disc brake control provides effortless raising and lowering of the pedestal assembly eliminating any lifting requirement by maintenance personnel. The crane is designed specifically for the weight of the drive assembly and should not be used for lifting other equipment or people.

THE ULTIMATE IN SLUDGE PUMPS™

Swap-Your-Pump



A unique trial program that lets you try before you buy.
Contact us today to swap-your-pump.

info@pennvalleypump.com

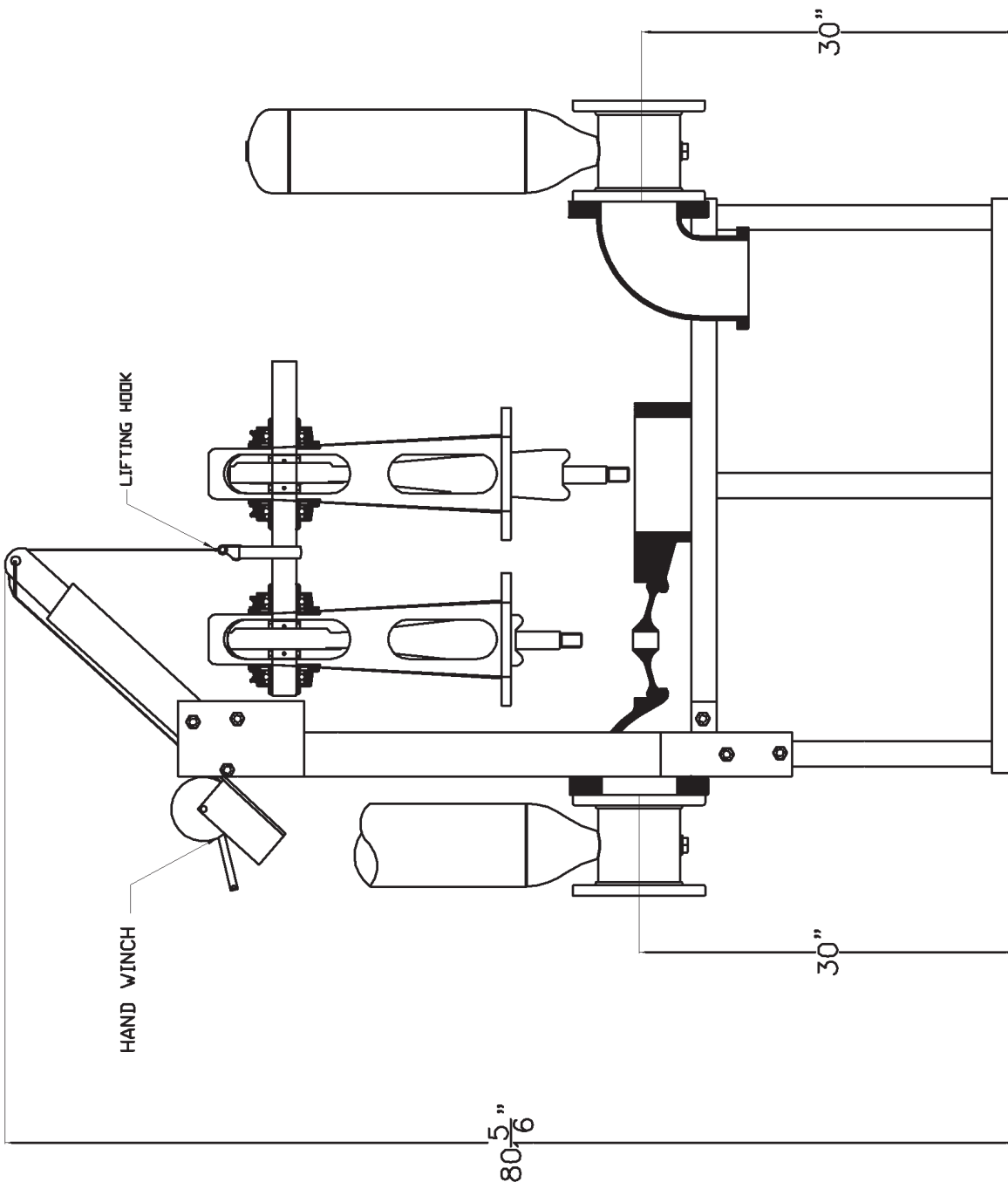
215-343-8750

Warrington, PA 18976

www.pennvalleypump.com



Model PVP837 Portable Davit Crane



- NOTES:
- MOTOR NOT SHOWN FOR CLARITY
 - PUMP PULLEY TO BE REMOVED PRIOR TO LIFTING DRIVE
 - CRANE IS TO BE USED FOR DRIVE END ONLY. DO NOT ATTEMPT TO LIFT ENTIRE PUMP
 - DIMENSIONS ARE APPROXIMATE PLEASE REFER TO SUBMITTAL DRAWINGS FOR ACTUAL HEIGHTS