



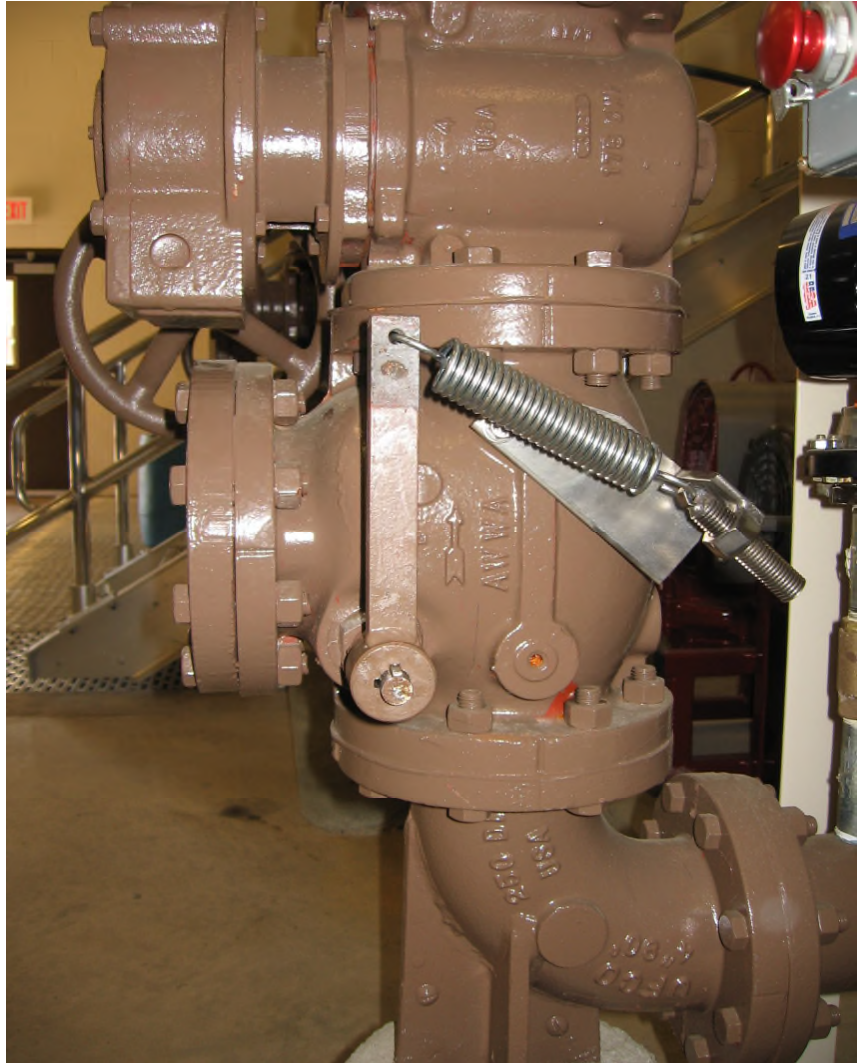
The World Leader in
Free-Disc Pumping
Technology



Model PVP759 Adjustable Back Pressure Valve

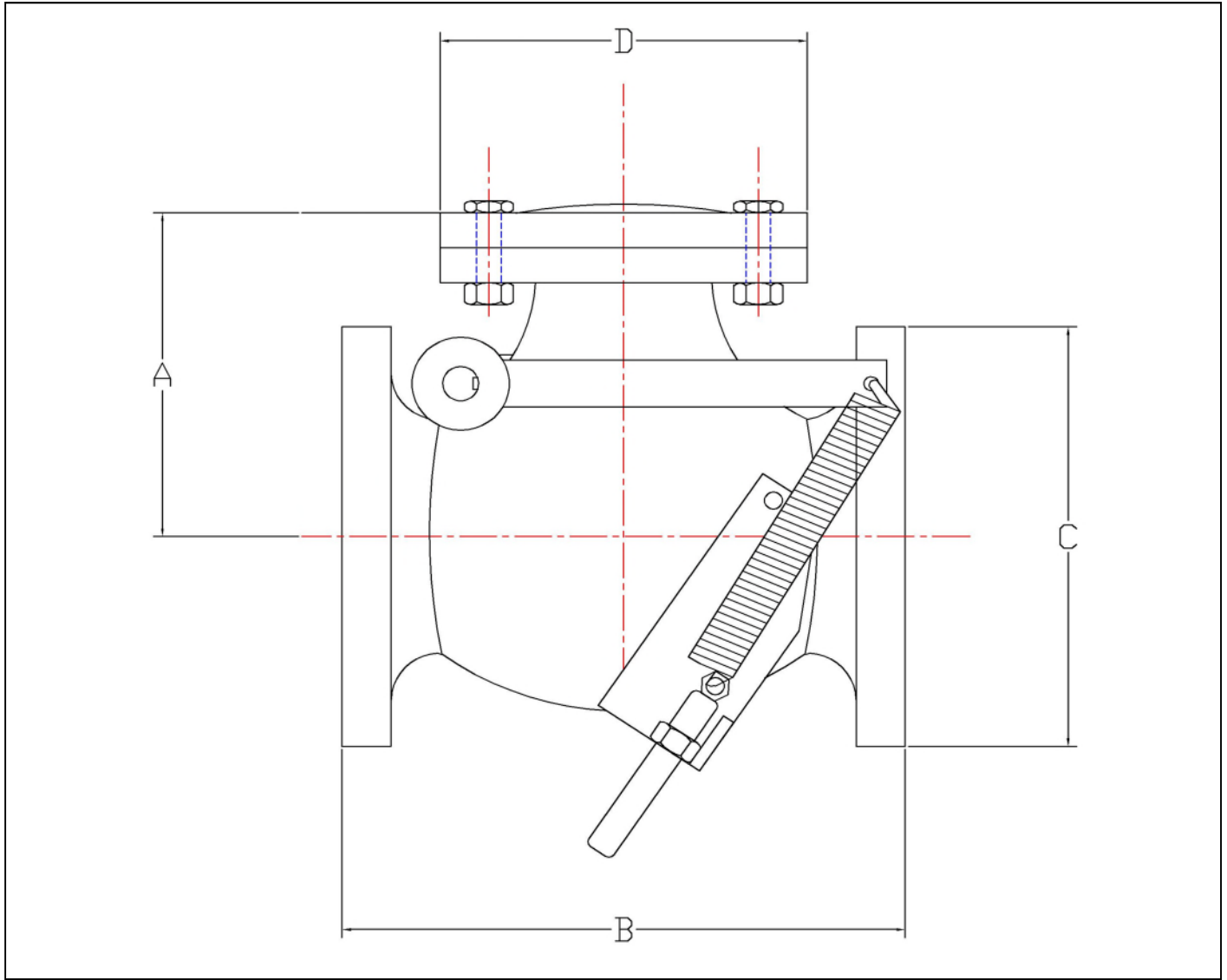
Penn Valley Pump Co., Inc. (PVP) manufactures a fully adjustable back pressure valve for sludge and slurry applications to be used in conjunction with our Double Disc Pump. In negative head (ie, pumping downhill) applications, the PVP back pressure valve can be used to create head-loss on the discharge side of the pump to provide a more accurate flow rate by helping the discs to valve.

Past methods to remedy the effects of negative head were to either install a piping loop in the discharge (which was not always feasible) or add an actuated valve in the discharge piping. By comparison, the PVP back pressure valve does not require additional piping nor air or electric power to actuate a valve. The PVP adjustable back pressure valve is a standard swing-type check valve (which is likely already required in many applications) with a heavy duty spring and bracket design added to allow the spring tension to be adjusted. This design provides a means to adjust the headloss (think adjustable orifice plate) for each application .



The spring tension can be adjusted to add approximately 2-10 psig of headloss to the discharge side of the pump. The standard valve is cast iron construction with an elastomeric faced valve disc for positive sealing and silent operation. The valves can be mounted either horizontally or vertically. The valves are available in sizes from 3" to 10" with 125# ASA flanged connection and have a working pressure of 200 psi.

Model PVP759 Adjustable Back Pressure Valve



Dimensions

MODEL	SIZE	A	B	C	D
PVP759-3	3"	6.25	9.50	7.50	7.5
PVP759-4	4"	7.50	11.50	9.00	9.00
PVP759-6	6"	9.50	14.00	11.00	11.00
PVP759-8	8"	11.25	19.50	13.50	13.50
PVP759-10	10"	14.25	24.50	16.00	16.00

