

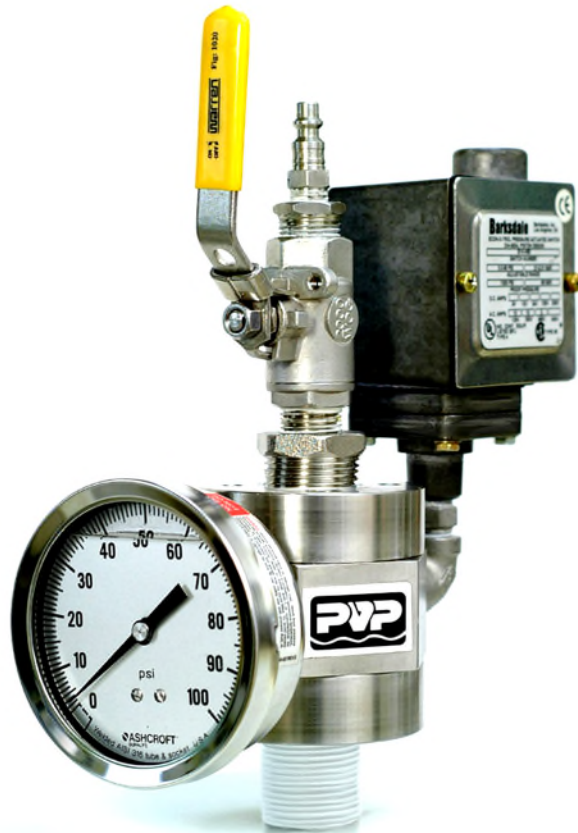


The World Leader in
Free-Disc Pumping
Technology



Model 420 Vacuum and Pressure Sensing Assembly

- **Pump Protection Device**
- **1" NPT SS316 Sensor**
- **EPDM Elastomeric Sleeve**
- **4" SS316 Gauge**
- **SS316 Isolation valve**
- **NEMA 4/4X or 7/9 Adjustable switch**
- **Quick Release Air Fittings**
- **Glycerin filled for smooth Operation**
- **100% made in the USA**

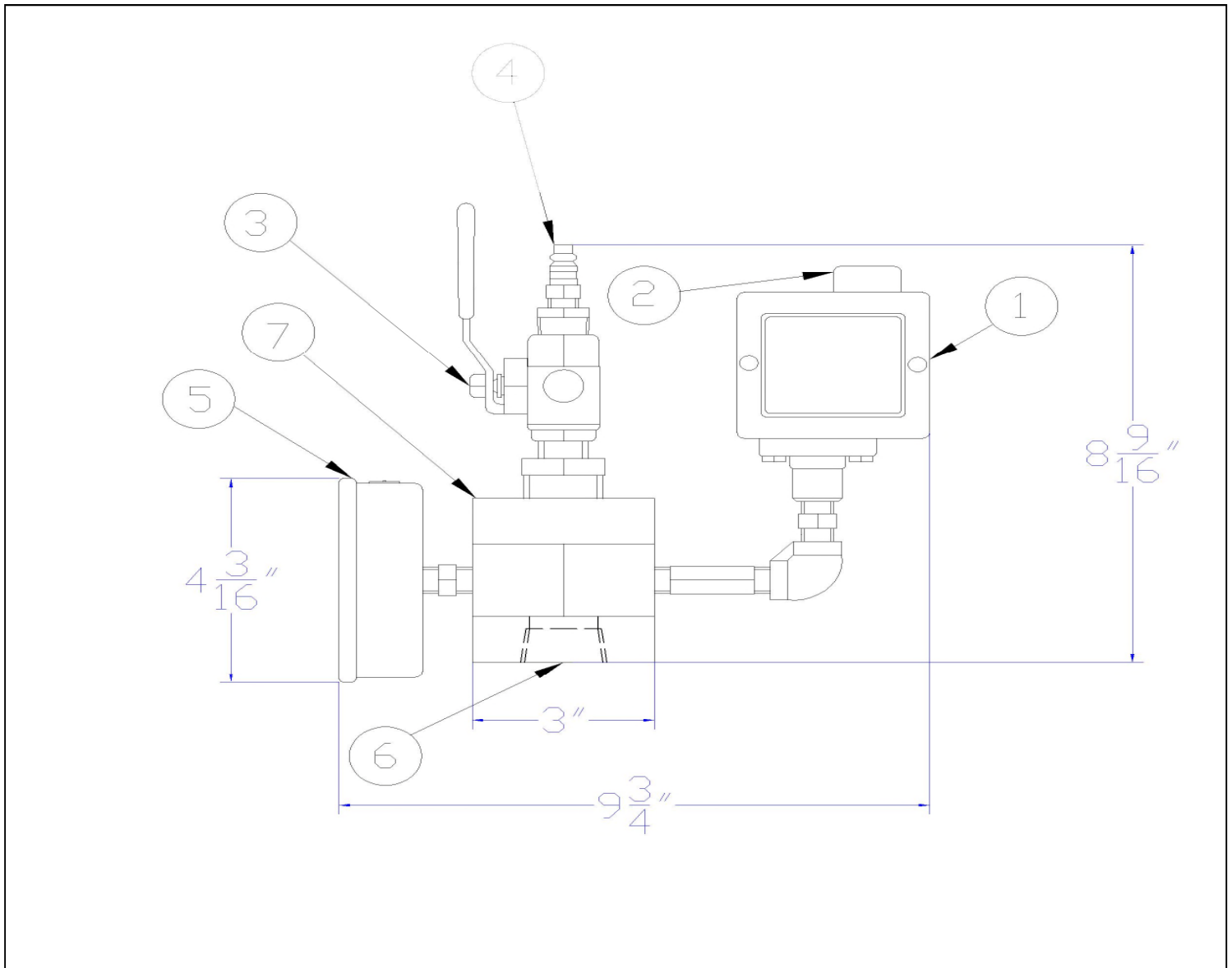


The model 420 vacuum and pressure sensing assembly was designed to provide protection for the Double Disc Pump™ line of positive displacement pumps manufactured by Penn Valley Pump Co., Inc. Our vast experience in pumping and hydraulics has led to a protective device that surpasses those previously available. This device provides protection against the inadvertent pumping against a closed valve or a blocked line thereby preventing damage to the pump.

As process pressure is sensed by the 360° elastomeric sleeve the captive fluid transfers the pressure to the gauge and switch providing for accurate readings and shutdown if the predetermined pressure has been exceeded. The vacuum assembly is equipped with a 30" HG to 30psi gauge and 30"Hg vacuum switch. The pressure assembly is equipped with 0-100psi gauge and 90psi switch.

This unit is typically mounted to the top of the pulsation dampener and can be cleaned in place by simply opening the isolation valve and utilizing the system pressure to clear the build-up. The quick-release air fitting is used periodically to replenish the air in the dampener that may have been absorbed by the process fluid.

Model 420 Vacuum and Pressure Sensing Assembly



Item	Description
1	Pressure Switch
2	Electrical Connection 1" NPT
3	1/2" SS316 Ball Valve
4	Quick Release Fitting
5	4-inch SS316 Gauge
6	Line Connection 1-inch NPT
7	SS316 Pressure Sensor

Assembly weighs 12lbs

